

RNAV (GPS) RWY 34

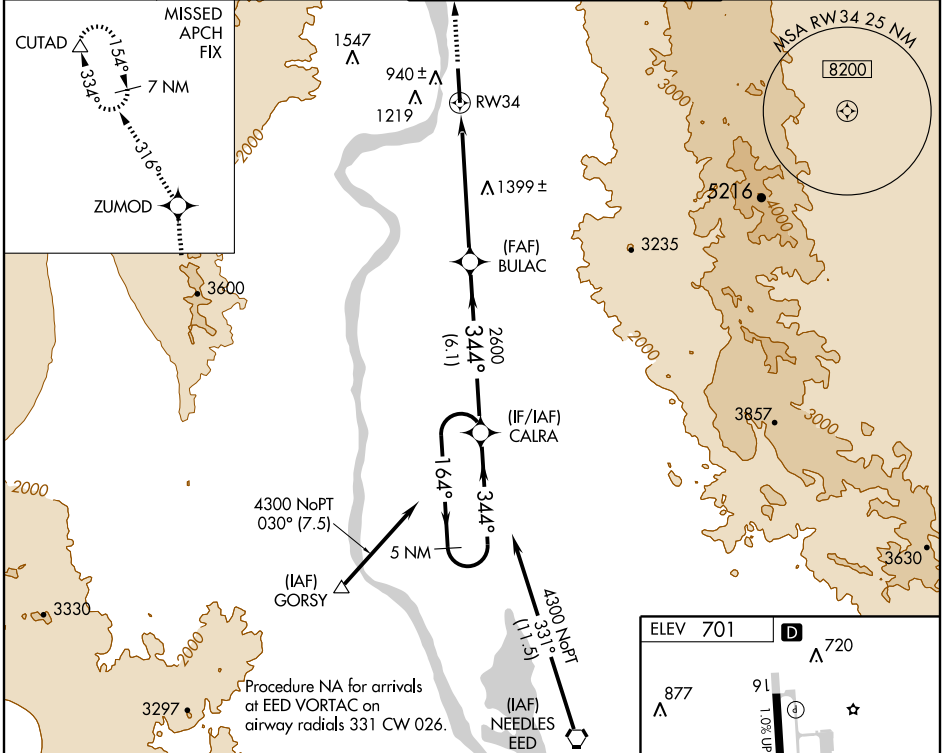
BULLHEAD CITY/LAUGHLIN/BULLHEAD INTL (IFP)

WAAS CH 82602 W34A	APP CRS 344°	Rwy ldg TDZE Apt Elev	7000 699 701
--	------------------------	-----------------------------	---

⚠ Circling to Rwy 16 NA at night.
⚠ DME/DME RNP-0.3 NA. Visibility reduction by helicopters NA.
 When local altimeter setting not received, use Needles altimeter setting and increase LPV DA 94 feet and all MDA 100 feet.
 VDP NA when using Needles altimeter setting.

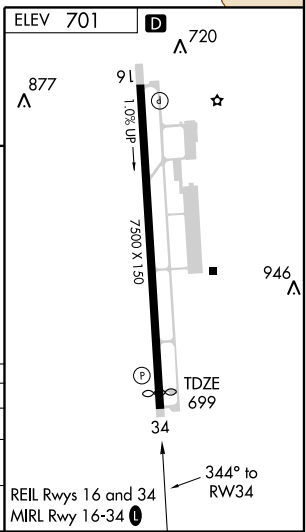
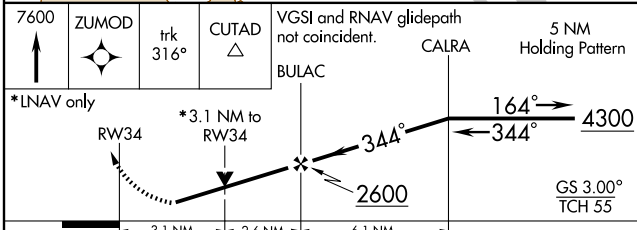
MISSED APPROACH: Climb to 7600 direct ZUMOD and via track 316° to CUTAD and hold, continue climb-in-hold to 7600.

AWOS-3 119.825	LOS ANGELES CENTER 134.65 360.65	LAUGHLIN/BULLHEAD TOWER* 123.9 (CTAF) 1	GND CON 118.25
-------------------	--	---	--------------------------



SW-4, 27 AUG 2009 to 24 SEP 2009

SW-4, 27 AUG 2009 to 24 SEP 2009



CATEGORY	A	B	C	D
LPV DA	1344-2½ 645 (700-2½)			
LNAV MDA	1740-1¼ 1041 (1100-1¼)	1740-1½ 1041 (1100-1½)	1740-3 1041 (1100-3)	1800-3 1099 (1100-3)
CIRCLING	1740-1¼ 1039 (1100-1¼)	1740-1½ 1039 (1100-1½)	1740-3 1039 (1100-3)	1800-3 1099 (1100-3)

RNAV (GPS) RWY 34